

Botany Evolution LLC

2510 Kirby Circle NE

Palm Bay, FL 32945

321-802-4583

Certificate Of Analysis**Sample Identification Information**

<u>Date of Analysis</u> 2/9/2021	<u>Country of Origin</u> FIJI
<u>Sample:</u> S1144	<u>Country of Processing</u> FIJI
<u>Product Name</u> KADAVU WAKA	<u>Manufacture Date</u> 02/08/21
<u>Lot#</u> FKK210208KW	<u>Best By Date</u> 02/08/24

General Product Specifications

<u>Product Species</u> Piper Methysticum	<u>Common Names</u> Kava kava, Awa, Yagona
<u>Part Used</u> Root	<u>Appearance</u> Yellow, beige powder

<u>Analyzed Characteristics</u>	<u>Specification</u>	<u>Result</u>	<u>Test Method</u>
<u>Standardization</u>	2-17% Kavalactones	6.86%	HPLC
<u>Identification</u>	Complies by HPLC	Conform	HPLC
<u>Kavalactone Profile</u>	Noble	PASS	HPLC
<u>Mesh Size</u>	60-30	60	Sieve
<u>Color</u>	Beige to Yellow	Pass	Visual
<u>Odor</u>		Pass	Organoleptic
<u>Taste</u>		Pass	Organoleptic
<u>Chemotype</u>		246351	HPLC
<u>K/DHM</u>		1.4	Calculation

Kavalactones	Code	Peaks Ref. (elution order)	Correction Factor	Area *	Area %	Corrected Kavalactones	Chemotype Identifier
Standard Kavain	K			2403.326			
Methysticin	M	1	2.21	1062.594	18.17%	1.28%	6
Dihydromethysticin	DHM	2	3.38	568.266	9.72%	1.01%	5
Kavain	K	3	1	2620.98	44.82%	1.45%	4
Dihydrokavain	DHK	4	3.08	702.545	12.01%	1.63%	2
Desmethoxyyangonin	DMY	5	2.52	295.03	5.05%	0.45%	1
Yangonin	Y	6	3.12	598.071	10.23%	1.04%	3
Kavalactones			Total:	5847.486	100.00%	6.86%	246351

*See data in attachment HPLC1100 Agilent Certificate with Chromatogram graph.

This result are in house tested and the best of our knowledge and experience. Using calibrated equipment.

We are dedicated to offer the best Quality of Botanical products on the market. We test and stand behind our products.

Disclaimer* the test results are accurate to the best of our knowledge and are based upon reputable laboratory and industry standard testing methods.

These results should not be used as a final determination for use in a finished product. It is recommended that you verify these test results with an in house quality control department or obtain an additional independent third party lab to verify that this material meets specifications

Botany Evolution, its board of directors, contract laboratories, employees, and affiliates are held harmless from any loss or damages resulting from the use or misuse of this document. The appropriate use of this product is the sole responsibility of the user of the purchasing party.

Chemist

Nustle Youngs

Date

2/10/21

SAMPLE S1144
 Vial 11

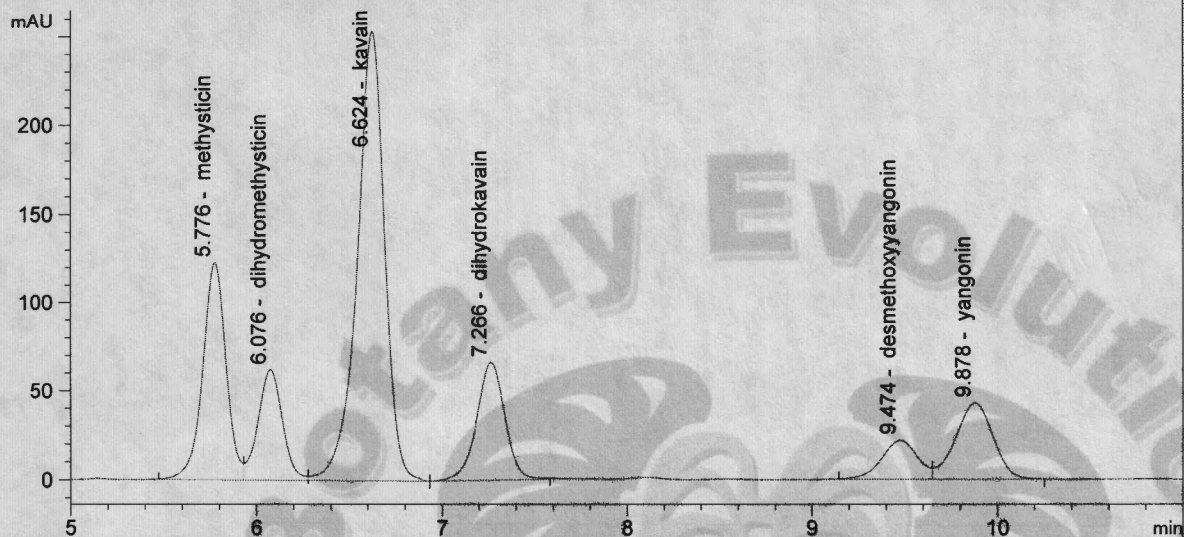
0.75143g/50mL

wavelength 246 nm

C:\CHEM32\1\DATA\KAVA_2_9_2021_15MINSTDTESTMETHOD 2021-02-09 14-45-18\011-->
 SEQUENCE C:\CHEM32\1\DATA\KAVA_2_9_2021_ ->

Injection date 2/9/2021
 Injection time 6:32:19 PM
 Acq. operator KRISTL
 Method C:\CHEM32\1\METHODS\KAVA15MIN STD TEST.M

DAD1 C, Sig=246,10 Ref=500,60 (KAVA_2_9_2021_15MINSTDTESTMETHOD 2021-02-09 14-45-18\011-1101.D)



#	COMPOUND	RET. TIME	AREA	AREA %	AMOUNT
1	methysticin	5.776	1062.594	18.17	0.000
2	dihydromethysticin	6.076	568.266	9.72	0.000
3	kavain	6.624	2620.980	44.82	0.000
4	dihydrokavain	7.266	702.545	12.01	0.000
5	desmethoxyyangonin	9.474	295.030	5.05	0.000
6	yangonin	9.878	598.071	10.23	0.000

2/16/21
 18